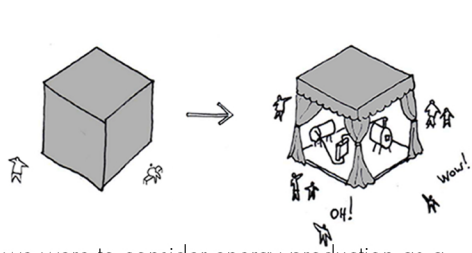




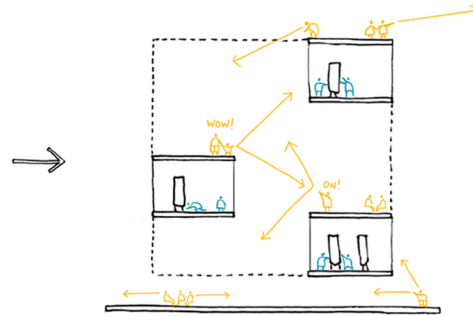
This project has received funding from the European Union's Horizon 2020 research and innovation programme under grant agreement No 864374.



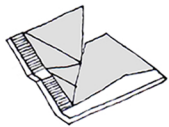
If we were to consider energy production as a "black box" in the project, we would miss the possibility of sharing and producing knowledge. By **showing the energy production**, the prototype seeks to **disseminate and raise awareness** among citizens in order to promote responsible consumption.



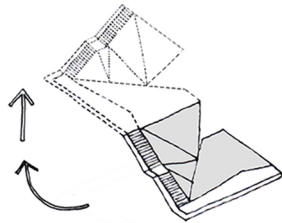
If energy production and the additional function were arranged as two programmes side by side, the opportunity to generate **positive feedback** would be lost.



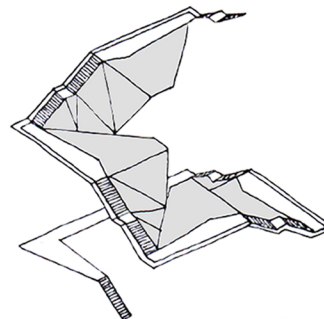
Instead, we propose to arrange the programmes in such a way that they can **interact with each other and multiple relationships occur**.



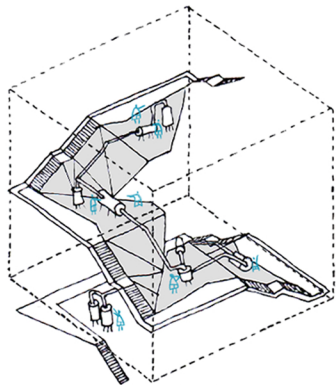
For ease of construction and resource efficiency, the system is based on a prefabricated **module**.



The modules are easily assembled together on site.

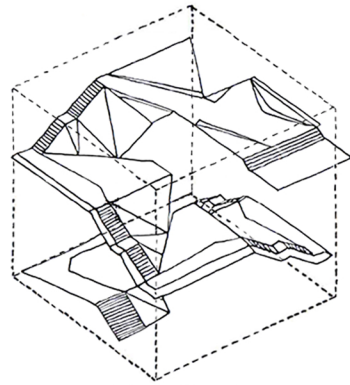


Depending on the **required MW** to be produced, the number of modules may vary.



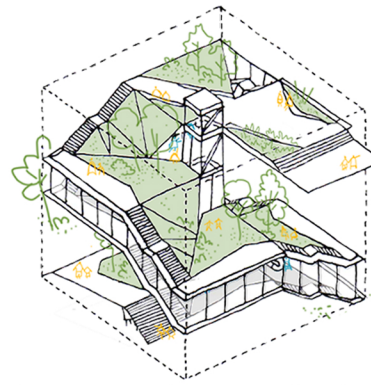
energy production

In this way, the space that houses energy production is configured.



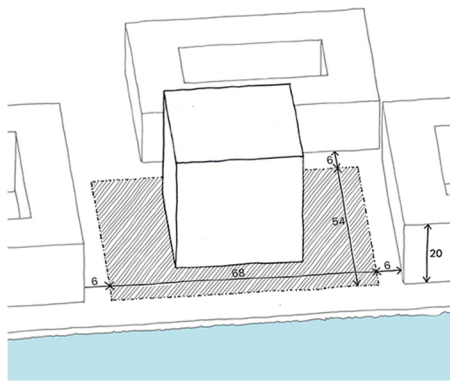
additional function

The additional function **could vary depending on the requirements of the site** (educational, cultural, commercial, sports, recreational).

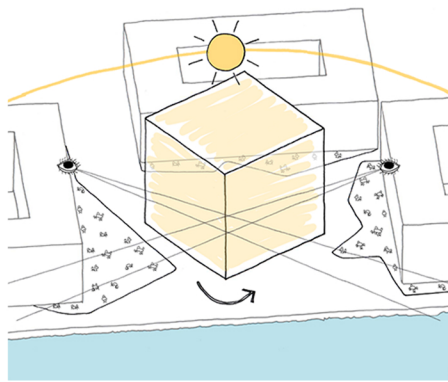


independent yet interrelated functions

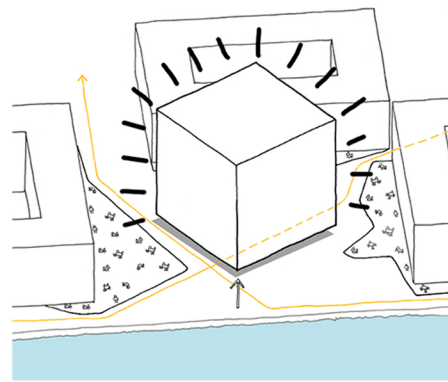
Since the prototype will be located in an area with scarce **public green spaces** (Nordhavn), we decided to make that the additional function.



Given the limited space in the urban context, a **compact volume** has the potential to provide **more public urban space** and **makes room for nature**.



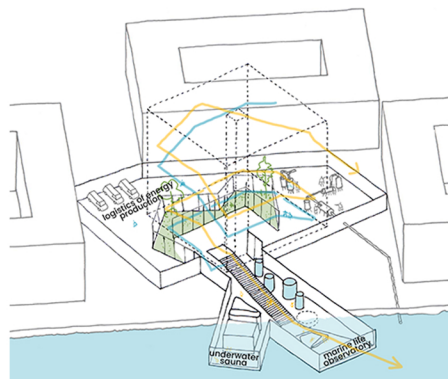
By **rotating** it, the building receives **more sunlight**, the cafes at ground level have **larger expansions** and neighbours have **longer views**.



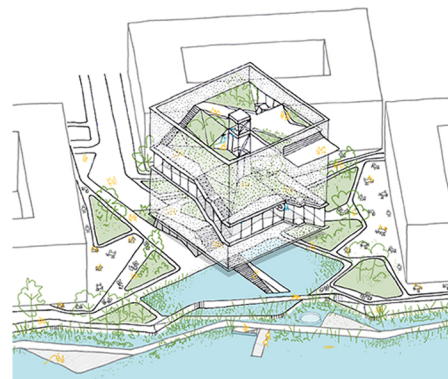
By **raising it off the ground**, the building becomes a **landmark** and the ground floor becomes **unobstructed**.



Strong winds are considered **as a strength**. A **kinetic façade** generates **electrical energy** for the pumps while creating a **microclimate** in the elevated green areas and reinforcing the **landmark** quality.



A **marine life observatory** promotes conservation awareness and a **sauna** reinterprets the traditional Nordic experience. **Citizen involvement**: Two routes intertwine from the seabed to the urban viewpoint, allowing visitors to socialise and learn.



Reconnecting sea and land
The hard limit that prevails along most of Copenhagen's coastline is replaced by a **soft transition** that increases **biodiversity** and **reconnects people with nature**.

